

# **SAR HAWK**

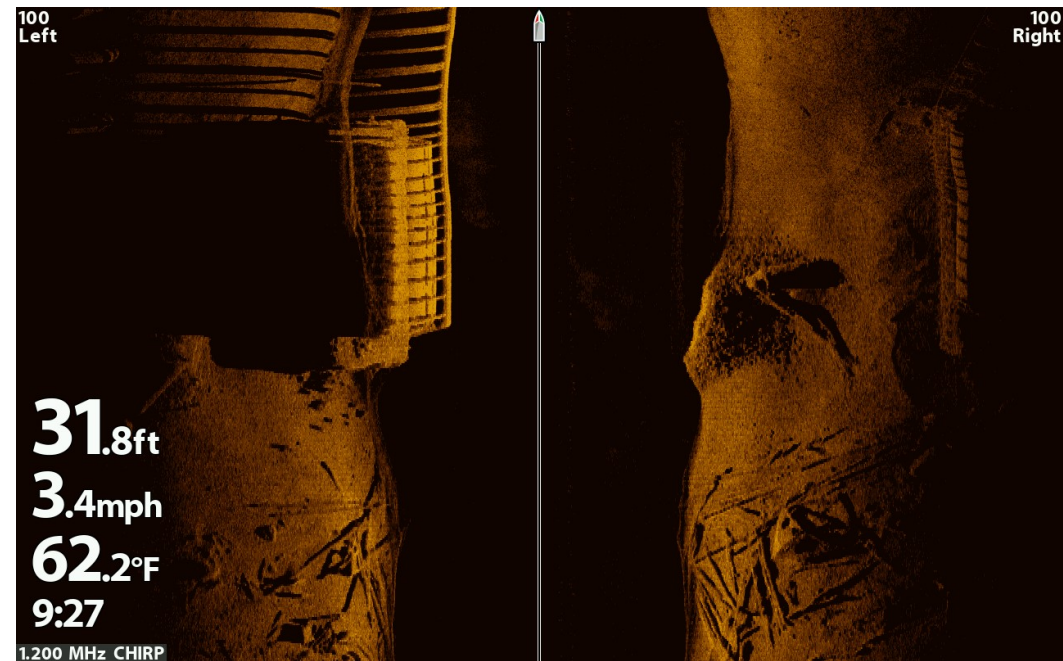
---

Humminbird® Sonar  
Target Recognition Software

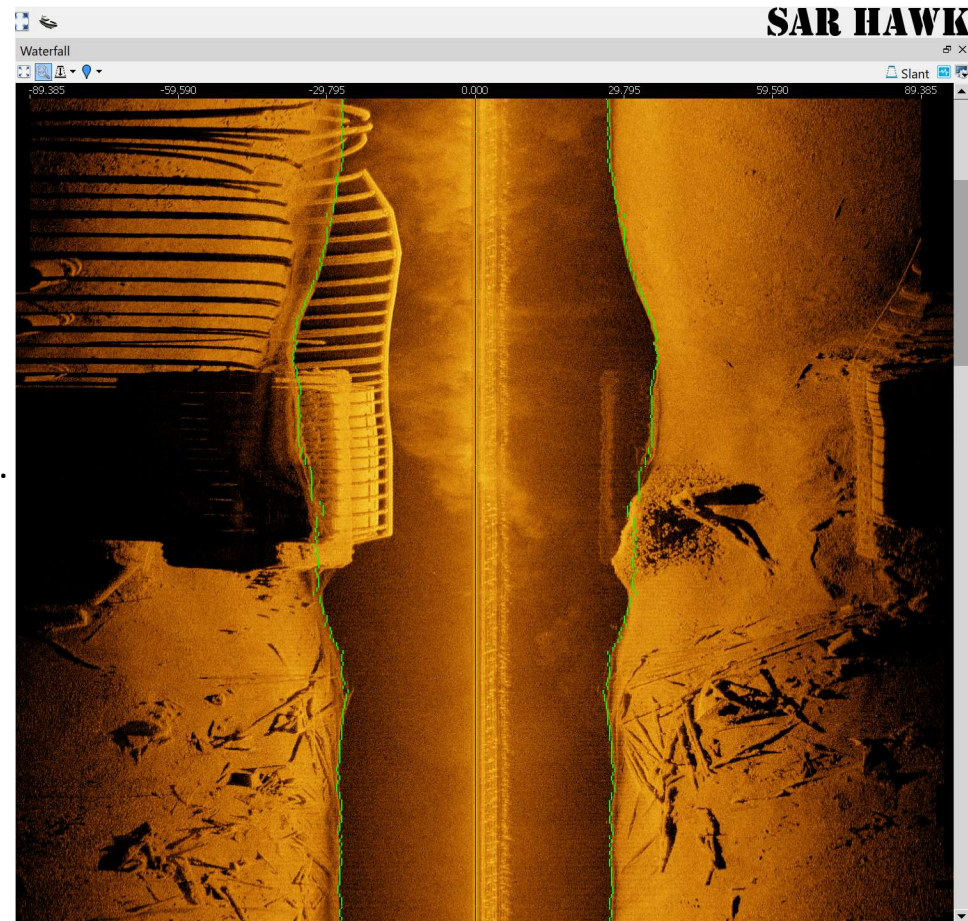
Professional software for SAR professionals

# Imagery Enhancement

Humminbird HELIX MEGA SI G2N



VS.



# Target Marking and Analysis

Demo\_data - SAR HAWK v1.2.960 32-bit

**SAR HAWK**

Mosaic View

Hide sidebar

Live info

UTC 2016/07/13 14:30:10  
 N43°50.5648'  
 W91°15.0769'

HDG 81.1° ALT 5.6 ft  
 SVEL 1450.0 m/s SPD 5.1 knts

Playback controls

Processing controls

SLS Bathy

Beam width 10.0°

Filters

Swath list

- R00004.DAT
- R00004.DAT

Delete

rn Hemic 5.0cm .akin\_Search/R00004.DAT

Waterfall

0.00 32.81

39.308 -26.205 -13.103 0.000 13.144 26.287 39.431

Slant

Contacts

Sea... Search

Cont... Cont...

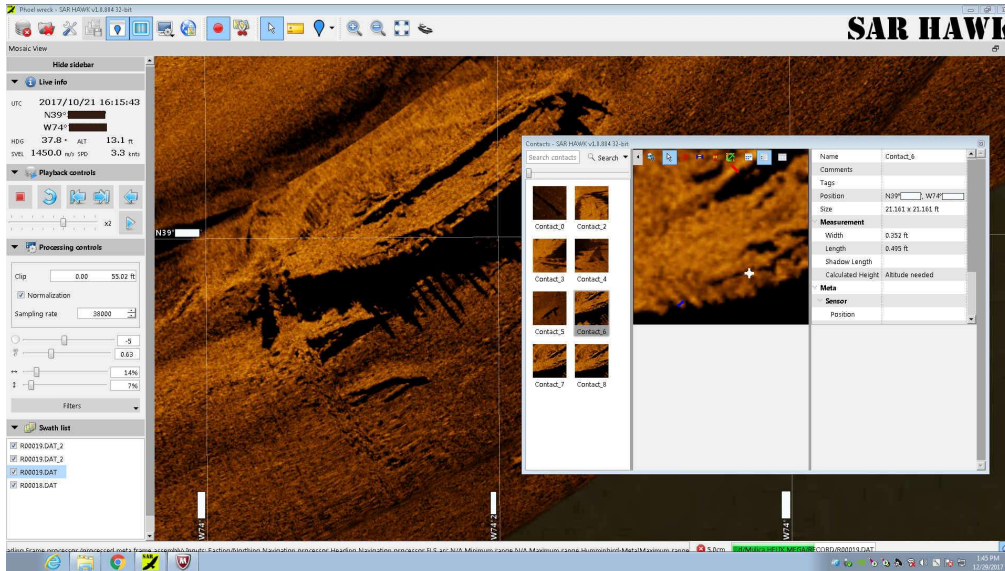
Name	Contact_0
Comments	
Tags	
Position	N43°50.581', W91°15.148'
Size	62.403 x 62.403 ft
<b>Measurement</b>	
Width	
Length	
Shadow Length	
Calculated Height	Altitude needed
<b>Meta</b>	
<b>Sensor</b>	
Position	N43°50.570', W91°15.142'

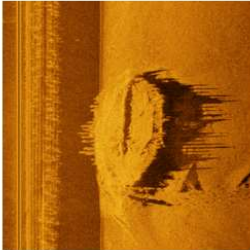

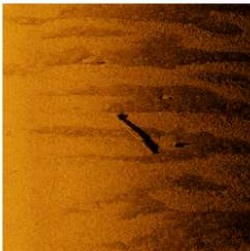

Name	Comments	Tags	Latitude	Longitude	Width (ft)	Length (ft)	Shadow Length
------	----------	------	----------	-----------	------------	-------------	---------------



# Generate Detailed Target Reports

Give Diver/ROV recovery teams the precise target location with sonar imagery snippet

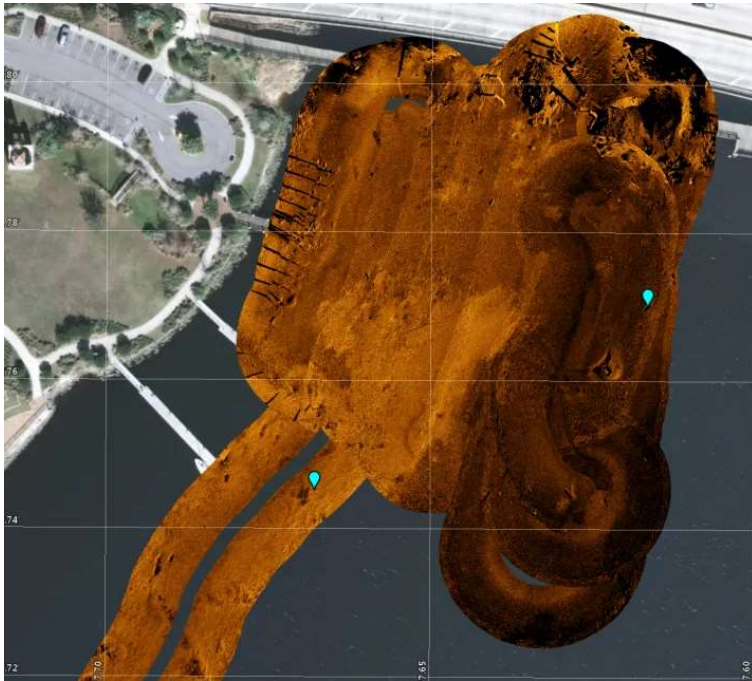


Contact Report	
	<p>Name: Contact_31</p> <p>Time: 2017/10/21 16:14:52.253 UTC</p> <p>Lon/Lat WGS84: W74°28.322', N39°33.261'</p> <p>Easting/Northing: ,</p> <p>Range:</p> <p>Heading: 0.000°</p> <p>Sonar Altitude: 0.000ft</p> <p>Sonar depth: 0.000ft</p> <p>Image Resolution: 0.0828828125ft</p> <p>Measured Width: ft</p> <p>Measured Length: ft</p> <p>Measured Shadow: ft</p> <p>Height from Shadow: 0.000ft</p> <p>Comment:</p>
	<p>Name: Contact_24</p> <p>Time: 2017/10/21 15:32:56.735 UTC</p> <p>Lon/Lat WGS84: W74°27.942', N39°33.442'</p> <p>Easting/Northing: ,</p> <p>Range:</p> <p>Heading: 0.000°</p> <p>Sonar Altitude: 0.000ft</p> <p>Sonar depth: 0.000ft</p> <p>Image Resolution: 0.123681640625ft</p> <p>Measured Width: ft</p> <p>Measured Length: ft</p> <p>Measured Shadow: ft</p> <p>Height from Shadow: 0.000ft</p> <p>Comment:</p>
	<p>Name: Contact_15</p> <p>Time: 2017/10/21 14:26:8.576 UTC</p> <p>Lon/Lat WGS84: W74°27.693', N39°32.988'</p> <p>Easting/Northing: ,</p> <p>Range:</p> <p>Heading: 0.000°</p> <p>Sonar Altitude: 0.000ft</p> <p>Sonar depth: 0.000ft</p> <p>Image Resolution: 0.087126953125ft</p> <p>Measured Width: ft</p> <p>Measured Length: ft</p> <p>Measured Shadow: ft</p> <p>Height from Shadow: 0.000ft</p> <p>Comment:</p>
	<p>Name: Contact_13</p> <p>Time: 2017/10/21 14:20:58.675 UTC</p> <p>Lon/Lat WGS84: W74°27.638', N39°32.884'</p> <p>Easting/Northing: ,</p> <p>Range:</p> <p>Heading: 0.000°</p> <p>Sonar Altitude: 0.000ft</p> <p>Sonar depth: 0.000ft</p> <p>Image Resolution: 0.08712109375ft</p> <p>Measured Width: ft</p> <p>Measured Length: ft</p> <p>Measured Shadow: ft</p> <p>Height from Shadow: 0.000ft</p> <p>Comment:</p>

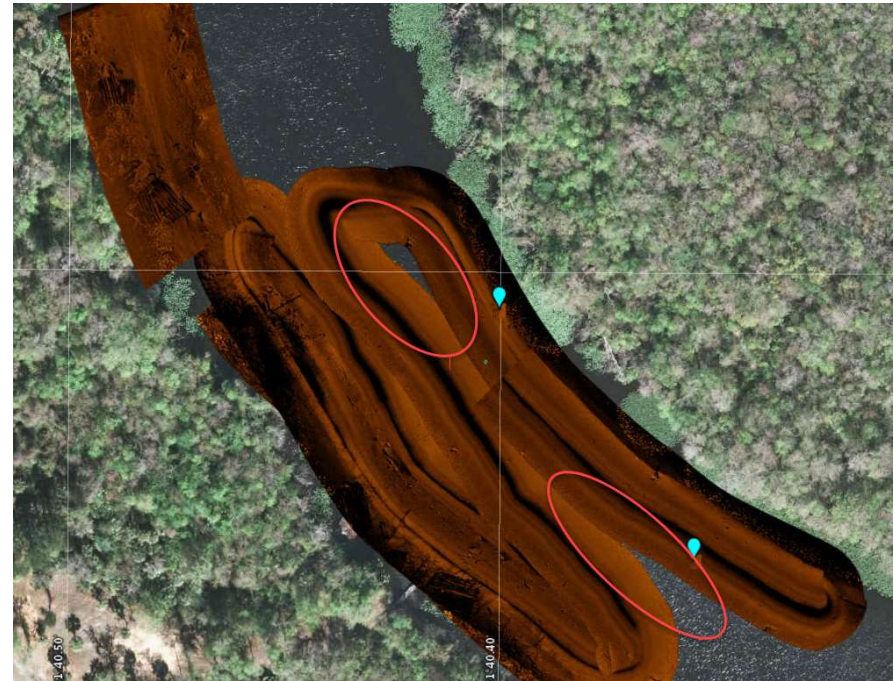
# Mosaics with Background Charts or Imagery

---

Verify complete survey coverage



Detect gaps in coverage

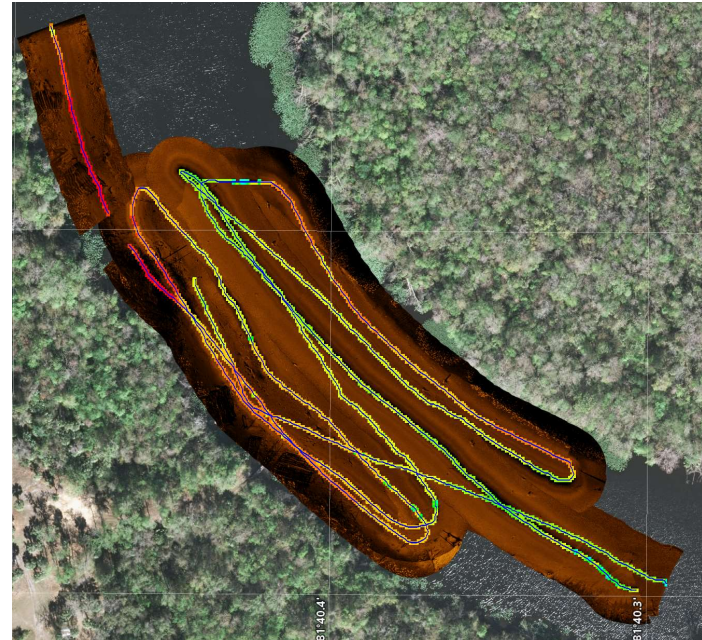
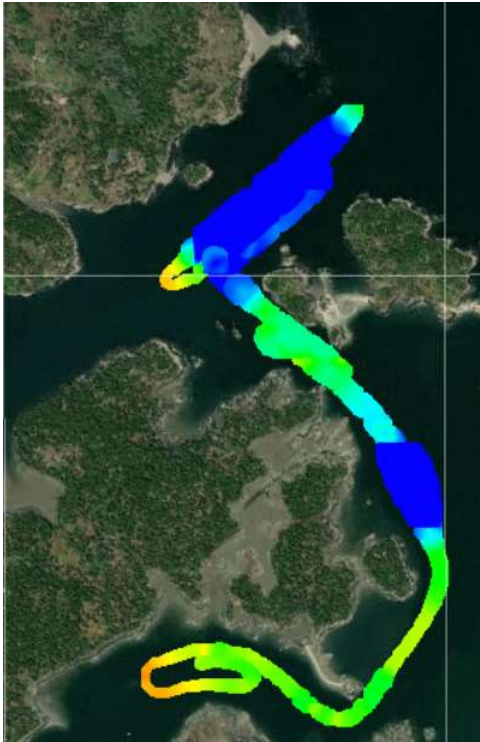




# Bathymetry from Altitude

---

XYZ export in US State Plane, WGS84, NAD83, NAD27, and more

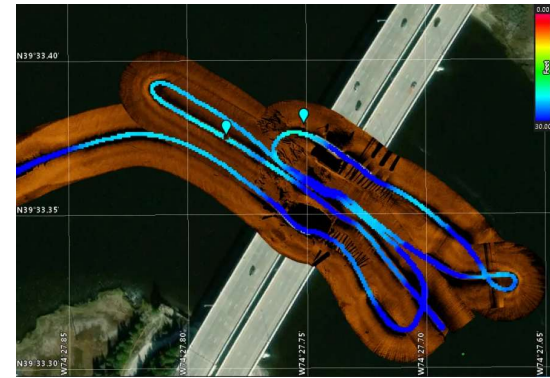


# Import / Export Maps - Charts - Imagery



Post Mission Coverage (Mosaics)

Overlay Charts & SAT Imagery



Pre-dive Hazard &  
Condition Reports

